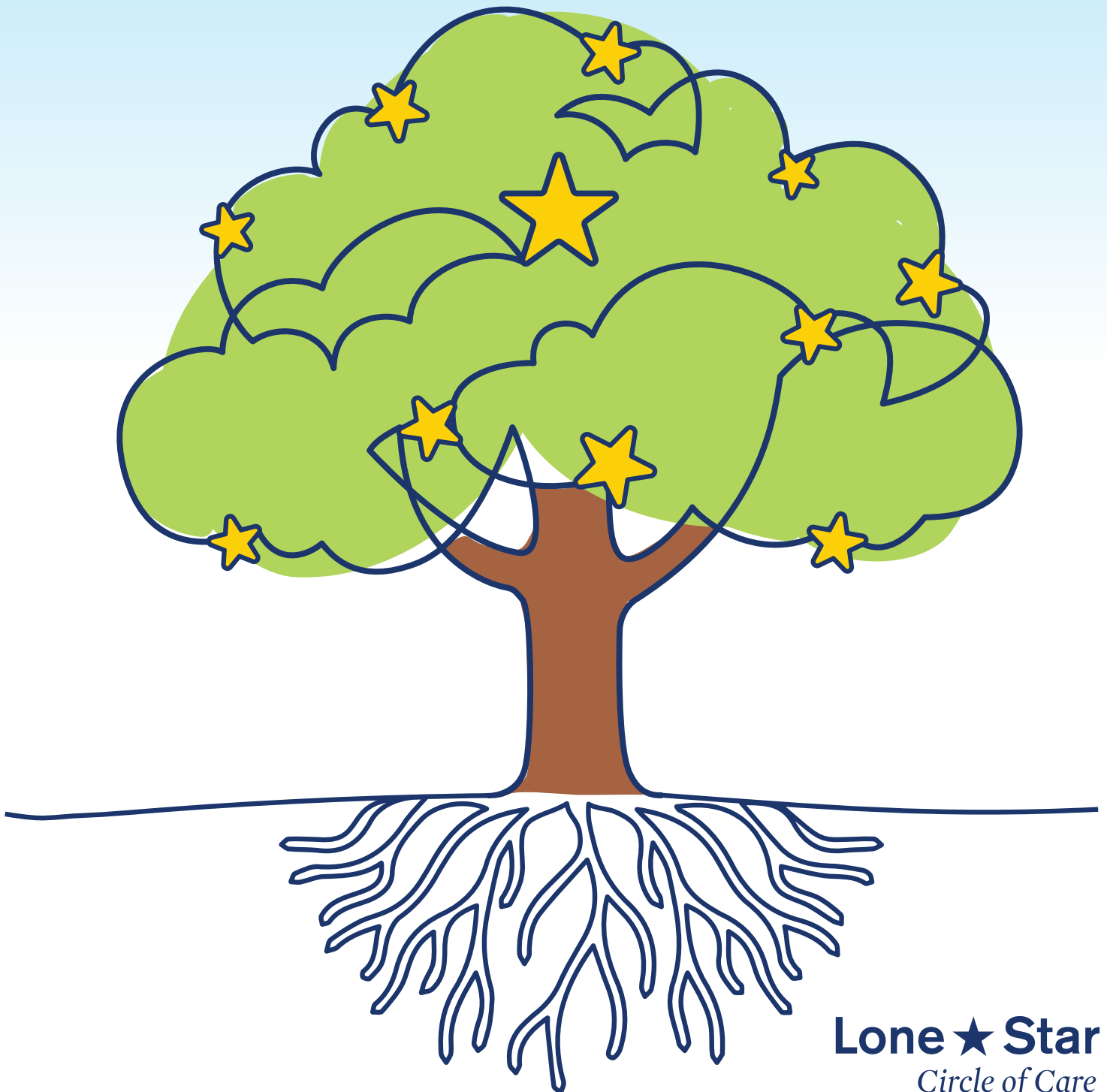


Reinforcing Our Foundation

Nurturing Deep Roots in Our Communities

2023 Annual
Report



Lone ★ Star
Circle of Care

Anchored in Mission

A Foundation Built on Purpose & Integrity



Table of Contents

Letter From Our CEO / Our Priorities	03-04
Letter From Our Board President / Preserving Our Mission	05-06
Striving for Excellence / Executive Team / Board of Directors	07-08
Caring Beyond the Exam Room / Partnering to Progress Health	09-10
Cultivating Success	11-12
Embracing All Communities	13-14
Reinforcing Our Communities	15-16
Riding For a Cause	17-18
Moving Healthcare Forward	19-20
Delivering Exceptional Healthcare	21-22
Sharing the Vision	23-24
Leveraging Technology	25-26
Financial Sustainability	27-28
Preserving Your Healthcare Home	29-30



Jon Calvin
Chief Executive Officer

After persevering through a global pandemic and its ongoing reverberations, Lone Star Circle of Care (LSCC) has set our future course with a newly developed three-year Strategic Plan. LSCC's ambitious yet pragmatic 2023-2025 Strategic Plan aims to take LSCC to new heights in healthcare access, patient experience, employee engagement, safety, quality, and health outcomes. The 2023-2025 Strategic Plan is also fully aligned with LSCC's mission of providing exceptional and accessible patient-centered healthcare for our Texas neighbors.

Deep-seated in LSCC's identity is the relentless drive for improvement, and our focus in 2023, and carrying forward into the next two years, is aligned with this attribute. The 2023-2025 Strategic Plan delineates how we plan to meet the key challenges ahead, maintain high value care, and move LSCC forward. To accomplish this, four distinct priority areas are identified:

- 1. Our People**
- 2. Effective Use of Technology**
- 3. Exceptional Patient Care**
- 4. Sustainability**

Our people and culture are the foundation of LSCC and to excel in the remaining priority areas, this strong foundation must be intact. The use of automation and technology advances will inform targeted care delivery to improve patient outcomes and experience as well as contribute to increased employee satisfaction and clinician retention. Striving for exceptional, equitable patient care will not only result in healthier communities, but also will support our value-based care goals that contribute to LSCC's continued financial sustainability.

Delivering on all four priorities in the 2023-2025 Strategic Plan will advance the aspects of our shared vision: to eliminate health inequities, facilitate wellness and optimal living, and strengthen the communities we serve.

Thanks for all you do,

Jon Calvin
Chief Executive Officer

2023-2025 TOP STRATEGIC PRIORITY AREAS

Our Mission: *Lone Star Circle of Care provides exceptional and accessible patient centered healthcare for our Texas neighbors.*

Our Vision: *We will eliminate health inequities to facilitate wellness and optimal living for all, helping strengthen our communities.*

Our Values: *Compassion, Integrity, Respect, Service, Innovation, Excellence*

PEOPLE

We ensure a culture that values, respects, and treats employees equitably

We have a stable workforce designed to provide high quality care

PATIENT CARE

We contribute to healthier communities

TECHNOLOGY

We leverage technology innovations to advance care

We enhance patient, provider, and staff digital experience

SUSTAINABILITY

We maximize opportunities to build financial stability





Steve Peña

Board of Directors President & Chair

I have had the privilege and honor of serving on the Board of LSCC for nine years. Since joining in September 2014, I have served as a member of both the Finance and Executive Committees. I have previously served as Treasurer and now serve as President.

My journey with LSCC began after a meaningful discussion with Scott Alarcón about the organization's restructuring efforts, which included the addition of new board members. Having just completed a lengthy tenure on the Texas State Board of Public Accountancy, I saw LSCC as a fitting next step. For me, the decision to join has been a most rewarding experience.

I have been fortunate to have served on other boards, both governmental and non-profit. But I can say that I have never served with more uniquely qualified and dedicated directors than those on our current board. Their unwavering support, coupled with the outstanding leadership and support of CEO Jon Calvin and the executive team, has made my tenure both fulfilling and enjoyable.

During my relatively short time on the board, I have witnessed remarkable achievements of LSCC staff, including response to the global COVID-19 pandemic. I am proud to acknowledge the incredible dedication of our providers and frontline staff who worked tirelessly to deliver critical vaccines and treatments to our patients. Their heroic response undoubtedly saved lives.

As I look ahead to the next three years, my focus will be on implementing LSCC's 2023-2025 Strategic Plan and maintaining the organization's financial stability and prominent industry position.

In closing, I extend my heartfelt gratitude to each member of the LSCC community for making this journey so remarkable. Together, we will continue to build healthy families and strong communities.

Sincerely,

Steve D. Peña
President & Chair

Preserving Our Mission

Advancing a Brighter Future for Our Texas Neighbors

Our Services

- ★ **Behavioral Health**
LSCC offers psychiatry and psychotherapy for patients preschool age and up. Behavioral health services are integrated with primary medical care to provide seamless and holistic treatment.
- ★ **Convenient Care**
LSCC offers convenient care with walk-in appointments available at certain locations.
- ★ **Dentistry**
LSCC offers general dentistry for all ages.
- ★ **Family Medicine**
LSCC offers primary medical care for all ages, including prevention, diagnosis, and treatment of chronic conditions.
- ★ **Mobile Mammography**
LSCC's Big Pink Bus offers free and low-cost, high-quality screening mammograms across Central Texas.
- ★ **Obstetrics & Gynecology**
LSCC offers obstetrics and gynecology, including prenatal care, labor and delivery, family planning, and gynecological surgery.
- ★ **Pediatrics**
LSCC offers preventative and acute medical care for children and teens.
- ★ **Pharmacy**
LSCC offers substantially discounted prescription medications for patients of LSCC's providers at LSCC's pharmacies and participating Walgreens.
- ★ **School-Linked**
LSCC offers access to primary medical care and behavioral health services for Georgetown Independent School District (GISD) employees, students, and their families.
- ★ **Senior Care**
LSCC offers preventative and acute medical care for patients age 55 and older, including diagnosis and treatment of chronic and complex conditions.
- ★ **Virtual Visits**
LSCC offers virtual visits day and night, which allow patients to have a safe and convenient video visit with an LSCC clinician.
- ★ **Vision**
LSCC offers general optometry for ages five and up, including glasses.

Striving for Excellence

Utilizing Experience to Plan for the Future



Executive Team & Clinical Leadership

Kathleen V. Butler
*Chief Medical Officer
& Chief Quality Officer*

Lindsey Tippit
Chief Operations Officer

Jon Calvin
Chief Executive Officer

Raj Diwan
*Director of
Dental Services*

Rodolfo Szoke
*Chief Information
Officer*

Back Row (L-R)

Tillery Stout
*Chief Administrative
Officer & General Counsel*

Didi Burnsed
*Director of Behavioral Health
Therapy – Quality*

Dorothea Pitikas
*Director of Behavioral Health
Therapy – Operations*



Adeyoyin “Lola” Okunade
*Medical Director of Family
and Adult Medicine*

Front Row (L-R)

2023 Board of Directors

			
Steve Peña <i>President & Chair</i>	Amy Medrano <i>Vice President</i>	Scott Alarcón <i>Treasurer</i>	Elizabeth Johnson <i>Secretary</i>

			
John Gustainis	Jack Hunnicutt	Alton McCallum	Rudolph Metayer

		
Sofia Nelson	Mark Schroeder	Roland Valle

Caring Beyond the Exam Room

A Comprehensive Approach to Wellness

Value-Based Care

Aligning to the *Sustainability* priority of LSCC's 2023-2025 Strategic Plan, LSCC is committed to maximizing value-based care opportunities. Value-based care is an alternative to the traditional fee for service reimbursement model, where providers are incentivized to maintain and improve health of patients through the provision of high quality, efficient care that is tailored to the individual.

The Population Health team helps facilitate a holistic and comprehensive approach to our patients' care. The team consists of Nurse Care Coordinators, a Clinical Pharmacist, a Referral Coordinator, a Colon Cancer Screening Coordinator, a Mother-Baby Nurse, and Support Staff to ensure that patients receive care based on their individual needs.

In 2023, LSCC implemented Chronic Care Management (CCM), a tailored experience for patients with two or more chronic conditions. In 2023, LSCC had over 700 patients enrolled in the program. One example of the program's success was a 77-year-old with diabetes, hypertension, and renal insufficiency. In May 2023, the patient's A1C was 9.1, well above the normal range of 6.0 or less. The patient enrolled in CCM with one of LSCC's Care Coordinators, lost 10 pounds, and lowered their A1C to 7.6. The patient reported feeling happier, more mobile, and with a better outlook on life thanks to their CCM Nurse.

Additionally, LSCC prioritizes Transitional Care Management. LSCC employs a multi-faceted approach to reach patients discharged from tertiary care settings. In 2023, the Population Health team facilitated over 2,000 appointments to connect patients to their Primary Care Provider (PCP) for a hospital follow-up visit. This ensures that the patient's PCP is promptly informed about the hospitalization and supports a smooth transition back to the patient's day-to-day life.

The Population Health team contributes to LSCC's pursuit of value-based care goals through supportive, high-touch care interventions.



Partnering to Progress Health

Collaborating With Our Healthcare Neighbors

To contribute to healthier communities, a 2023-2025 Strategic Plan goal, Lone Star Circle of Care strengthened partnerships with resources offering additional patient support and clinical services. Additionally, LSCC curated referral networks and implemented care models that mitigate health equity gaps.

Fresh for Less Mobile Market

LSCC at Collinfield hosts weekly reduced-price markets to improve access to healthy food. The Fresh for Less Mobile Market is possible through a partnership with Farmshare Austin. Fresh fruits and vegetables along with grocer goods like eggs, olive oil, and rice are available at the market. Customers can use credit cards and SNAP/EBT for their purchases.



CHWs Provide Additional Layer of Support to Patients

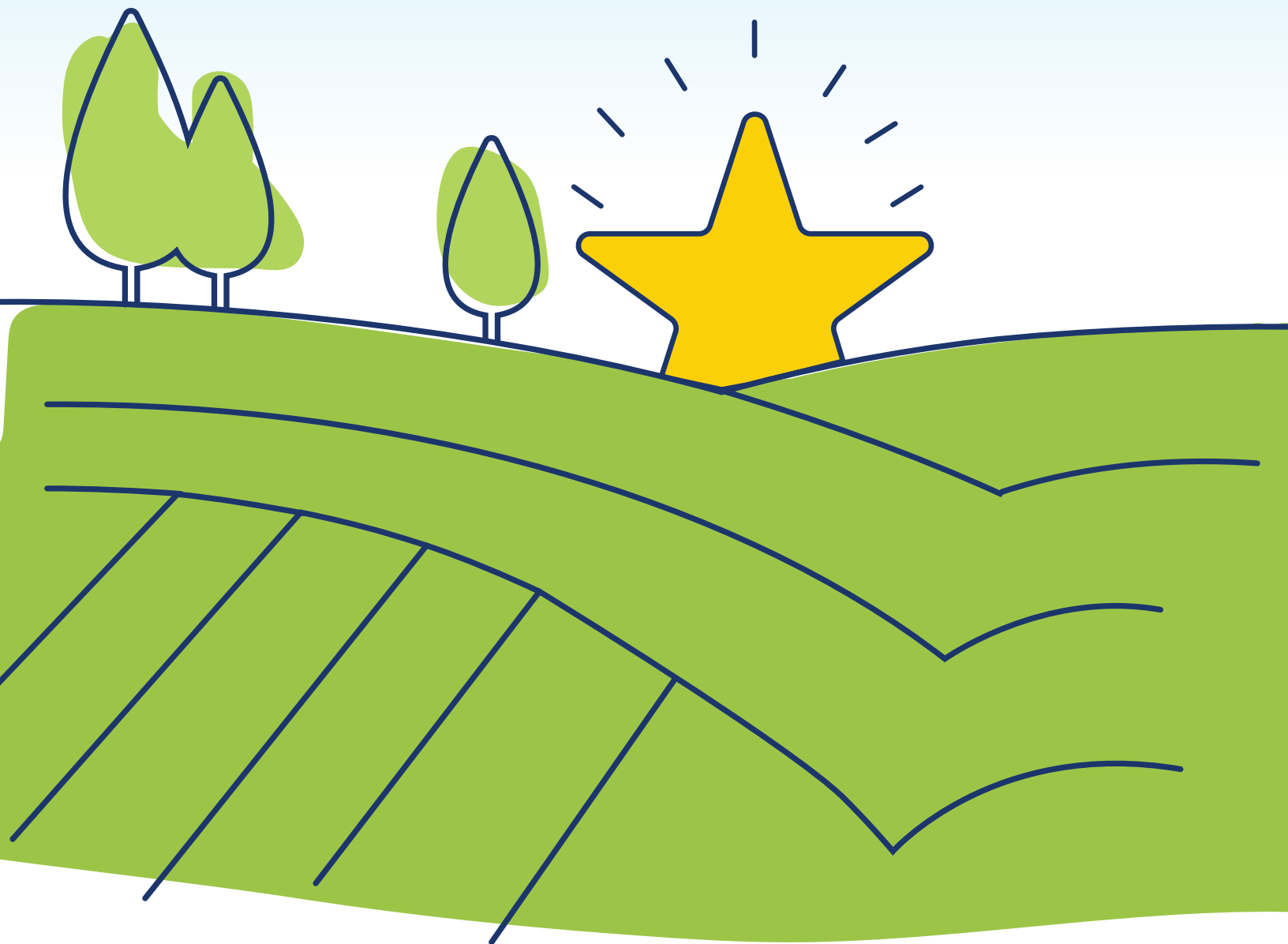
Community Health Workers (CHWs) serve as liaisons between patients, LSCC medical and social service team members, and community partners providing non-medical services critical for health. In 2023, CHWs worked with LSCC's Continuous Glucose Monitoring (CGM) pilot program to improve A1C in a group of patients with uncontrolled diabetes. The pilot program provided free CGM devices and sensors to LSCC patients with uncontrolled diabetes and no insurance coverage. Patients trusted CHWs and were comfortable reaching out to them with questions and concerns between appointments. In fact, one patient called a LSCC CHW to share that the CGM sensor alarm saved their life. The patient felt very ill, and their sensor alarm went off to alert them that their blood sugar was low. The patient immediately ate something to help bring their glucose level back to normal. Thanks to the support of our CHWs and the full LSCC care team, the CGM pilot was successful. Since participating in the pilot program, patients report they are happier and healthier.

New Pediatric Screening Tool – WE CARE

LSCC utilizes the WE CARE pediatric screening and referral workflow tool to identify families with unmet social needs such as childcare, employment, and housing. LSCC then utilizes the United Way for Greater Austin's Connect ATX program to help connect families to support services. The tool and program help ensure that LSCC patients receive dedicated referral follow up for any identified needs such as food pantries, financial assistance programs, transportation services, and programs to assist with childcare. LSCC successfully screened 330 families throughout the year and made 88 referrals to Connect ATX.

Cultivating Success

Maintaining Relationships to Better Services



In 2001, Lone Star Circle of Care was founded on the promise of bringing quality, affordable healthcare to all. Caring for our Texas neighbors, regardless of income or coverage status, takes significant resources. Addressing the social constructs that affect health, those that must be treated outside the exam room, do as well. LSCC's many donors, partners, and collaborators help make LSCC's mission a reality.

Partners & Grantors

- Ascension Seton
- Austin Physical Therapy Specialists
- Austin Radiological Association
- Austin/Travis County Health & Human Services
- Bluebonnet Trails Community Services
- Bastrop County
- Bastrop County Cares
- Bastrop County Indigent Health Care Program
- Bell County Public Health District
- Cedar Park Regional Medical Center
- Central Health
- City of Taylor
- CommuniCare
- CommUnityCare
- Community Health Best Practices, LLC
- Community Health Centers of South Central Texas
- ConferMED
- Delta Dental Community Care Foundation
- Dent-Well Campus Smiles
- El Buen Samaritano
- Episcopal Health Foundation
- Exact Sciences
- Family Connects International
- Georgetown Health Foundation
- Georgetown Independent School District
- Health Resources and Services Administration
- Houston Methodist
- Michael & Susan Dell Foundation
- National Association of Community Health Centers
- One Step Diagnostic
- Opportunities for Williamson & Burnet Counties
- People's Community Clinic
- Quest Foundation
- Dr. Sridhar P. Reddy, M.D.
- Samsung Austin Semiconductor
- St. David's Foundation
- St. David's HealthCare Partnership
- St. Joseph Medical Center
- Texas A&M Health Science Center
- Texas Association of Community Health Centers
- Texas Health & Human Services Commission
- United HealthCare Services, Inc.
- The University of Texas at Austin Dell Medical School
- Williamson County and Cities Health District

Big Pink Bus Contributors

- Ascension Seton
- Austin Radiological Association
- Baylor Scott & White Health
- Boss Babes ATX
- Central Health
- Central Texas Addressing Cancer Together
- Donna Stockton
- H-E-B
- Kanga Roofs
- Karen Cole
- Kendra Scott
- Kendra Scott Foundation
- Lowe Foundation
- Meyer Levy Charitable Trust
- Moody Foundation
- Shield-Ayres Foundation
- Shivers Cancer Foundation
- Southwestern University
- St. David's Foundation
- Tejemos Foundation
- Texas Department of State Health Services
- Texas Mamma Jamma Ride
- Texas Mutual
- Texas Oncology
- Tito's Handmade Vodka
- United Way for Greater Austin
- University Federal Credit Union
- The University of Texas at Austin Dell Medical School
- Williamson County
- ... and hundreds of generous individuals and families

Embracing All Communities

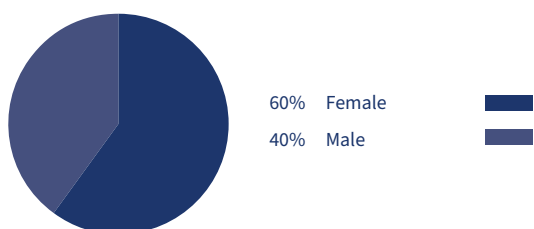
High Quality Healthcare for All



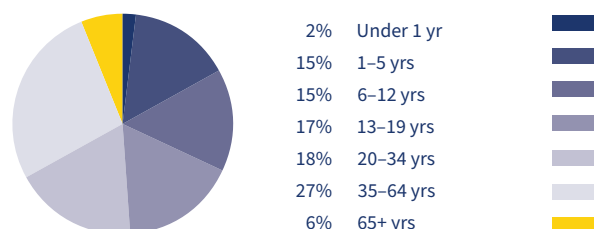
Who We Serve

At Lone Star Circle of Care, we are dedicated to providing high quality, comprehensive healthcare for all of our Texas neighbors. We utilize a patient-centered approach that embraces innovation and evidence-based practices. By analyzing our de-identified patient data, we are able to further tailor our healthcare offerings to best serve our patients. Creating a safe and trusting healthcare home is the heartbeat behind what we do.

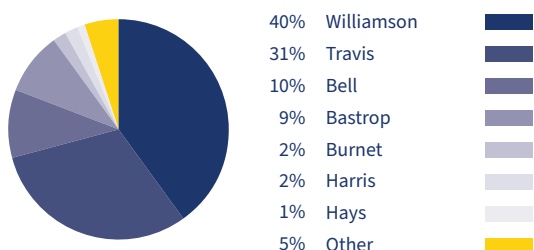
Gender



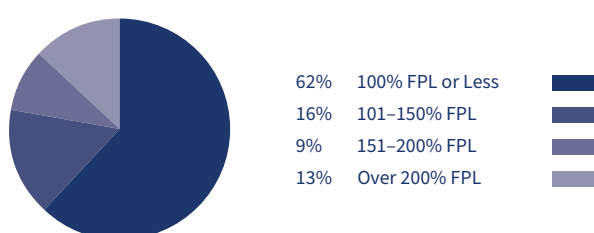
Age



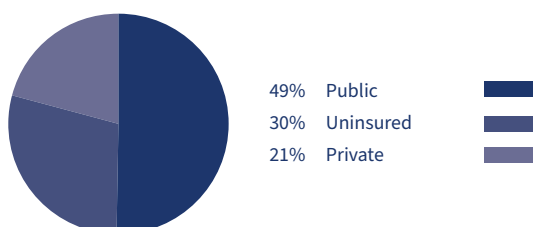
County Of Residence



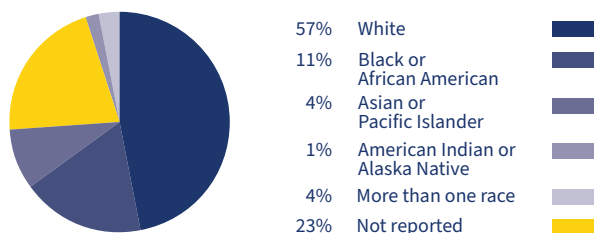
Income As Percent Of Poverty



Insurance Status



Race



*Source: 2023 UDS

*54% of patients identify as Hispanic or Latino

Top 25 Patient Zip Codes

• 78626	• 78602	• 76537	• 78549	• 78653
• 78664	• 76574	• 78613	• 78758	• 78617
• 78660	• 78641	• 78744	• 78745	• 78728
• 78634	• 78753	• 78681	• 76612	• 78624
• 78665	• 78628	• 76621	• 78542	• 78754

All patient demographic information above is based on fiscal year 2023 data.

Reinforcing Our Communities

Carrying Out Compassionate Care



How Many We Serve

Patient Visits

334,880

Patients Seen (Unduplicated)

96,127

Uncompensated Care Spending

\$31,449,865

How We Are Serving

Family Medicine Visits

88,106

Babies Delivered

2,126

Pediatrics Visits

121,623

Behavioral Health Visits

55,110

Vision Visits

1,635

OB/GYN Visits

39,524

Value of Prescriptions Dispensed

\$45,050,166

Mobile Mammography Visits

2,266

Convenient Care

2,822

Virtual Visits

39,024

Senior Care Visits

6,351

Pharmacy Services (Prescriptions)

236,073

Dentistry Visits

19,709

All patient visit information above is based on fiscal year 2023 data.

Riding for a Cause

On a Mission to Beat Breast Cancer



2023 Texas Mamma Jamma Ride

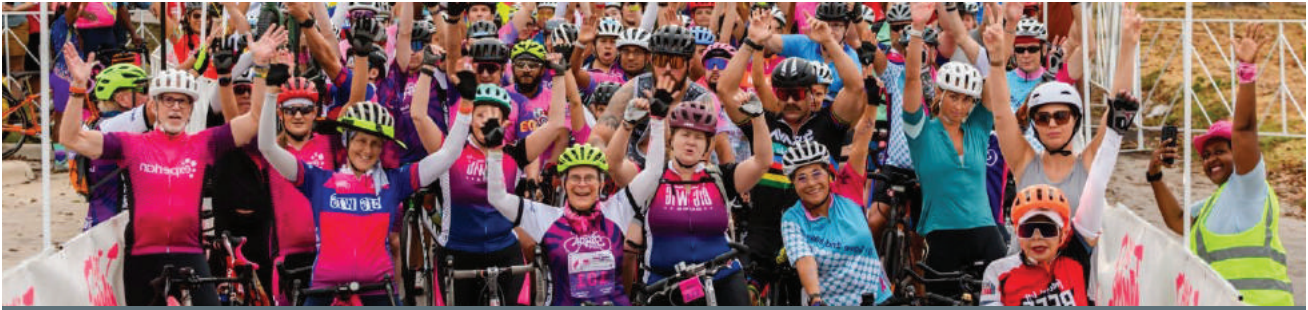
In its third year as part of the LSCC family, the 2023 Texas Mamma Jamma Ride was a huge success. The longstanding and popular Central Texas breast cancer prevention charity bike event raises funds exclusively to support the life-saving mobile mammography services of the Big Pink Bus. The event, held on Saturday, September 16, 2023, in Taylor, Texas, hosted 369 registered riders, 36 teams, 216 volunteers, and 43 sponsors.

In alignment with LSCC's 2023-2025 Strategic Plan **Sustainability** priority, the Ride maximizes opportunities to build financial sustainability for LSCC's Big Pink Bus. Additionally, the Ride addresses the **Patient Care** priority to mitigate health equity gaps in the community.

LSCC would like to recognize Marion Martin, esteemed Director of the Texas Mamma Jamma Ride, as she embarks on a well-deserved retirement. Marion's unwavering dedication and tireless efforts have been the driving force behind the success of the Texas Mamma Jamma Ride since she became Ride Director in 2016. Her passion for breast cancer prevention and LSCC's mission is inspiring, and her example of leadership leaves an indelible mark on our organization. Marion, thank you for being the heart and soul of the Texas Mamma Jamma Ride. We wish you happiness and fulfillment in your next chapter!



2023 Texas Mamma Jamma Ride Sponsors



Platinum Level

Samsung Austin Semiconductor

Gold Level

Clinical Pathology Laboratories
Equality Health
Equality Health Foundation

Silver Level

Texas Oncology
Quest Diagnostics

Bronze Level

Baylor Scott & White Health
Braun & Butler Construction
Comerica Bank
Frost Insurance
First Citizens Bank
H-E-B
Haddon + Cowan Architects

Hologic
Marsh McLennan Agency
Superior HealthPlan
USA Compression
WellMed
Winstead Attorneys

Steel Level

Bastrop Pickleball Association
IE2 Construction
KDK Group
Moss Adams
Mission Mobile Medical

Mombo Interiors
McCoy Rockford
O'Connell Robertson
Pensionmark
Prosperity Bank

In-Kind & Special Event

Liquid IV
Pickle Juice
Primal
Skinny Pop
Taylor Bike Company
Tito's Handmade Vodka
Trek Austin

Texas Beer Company
Walgreens
Siete Family Foods
Lifespring Chiropractic
Rambler Sparkling Water
Motorcycle Medical Response Team
Snackbox

Moving Healthcare Forward

Improving Our Infrastructure



Capital Improvements & Opportunities

Lone Star Circle of Care (LSCC) experienced a transformative year in 2023, marked by strategic capital improvement projects at multiple clinic locations. These efforts align with LSCC's **Sustainability** priority outlined in the 2023-2025 Strategic Plan, with the goal of optimizing existing physical space and carefully considering opportunities for expansion. These endeavors enhance LSCC's overall capacity and infrastructure to deliver high-quality patient services in professional, modern settings.

LSCC at Georgetown Women's Center Expansion

In March 2023, LSCC began renovations to expand LSCC at Georgetown Women's Center. The expansion allows LSCC to accommodate a fourth OB physician in the clinical footprint. The renovations also added a waived testing lab, more patient rooms, office space, and a new breakroom. The renovations increased the waiting room size and updated the floors, paint, and furniture.

LSCC at Ben White Health Clinic Refresh

In June 2023, LSCC completed a two-month project to refresh LSCC at Ben White Health Clinic. The updates included new baseboards, paint, and flooring and created a more welcoming and contemporary environment for LSCC patients and staff.

LSCC at Harker Heights Construction

In early 2023, LSCC began construction on a new 10,412 square foot, standalone building on Harker Heights property owned by LSCC. The new building will allow LSCC to consolidate two existing clinic sites, LSCC Pediatrics at Harker Heights and LSCC Behavioral Health at Harker Heights, into a single LSCC at Harker Heights clinic. With the larger clinic space, LSCC will expand service offerings by adding family medicine services and adult behavioral health care to the existing pediatric primary care and integrated behavioral health services. The new Harker Heights clinic is set to open in April 2024.

LSCC at St. John Partnership with Integral Care

LSCC continues its partnership with Integral Care to establish primary care access within Integral Care's traditional behavioral health care settings. In July 2023, Integral Care opened its new St. John clinic. By 2024, LSCC will begin Adult Medicine and Pediatric services within the St. John clinic.



Delivering Exceptional Healthcare

Recognition for Our Commitment to Excellence



2023 Achievements

Awards & Recognition

Lone Star Circle of Care's (LSCC) **Patient Care** priority, detailed in the 2023-2025 Strategic Plan, highlights LSCC's commitment to providing high quality care to the community. In 2023, the LSCC team streamlined clinical, population health, and administrative processes to support health outcomes.

HRSA Community Health Quality Recognition (CHQR)

For the tenth consecutive year, LSCC was recognized by the Health Resources and Services Administration (HRSA) as a Health Center Quality Leader, ranking among the top 20% of health centers in the nation for best overall clinical performance in 2022. Out of 72 Texas health centers reporting clinical data, LSCC was one of only 15 to receive gold or silver recognition. HRSA tracks clinical quality metrics for the nearly 1,400 health centers operating nationally. LSCC's 2022 performance exceeded the Texas average on 15 of 18 clinical quality indicators.

In addition to Health Center Quality Leader, LSCC also received the following recognitions from HRSA:

- **Advancing Health Information Technology (HIT) for Quality:** Recognizes health centers that meet all criteria to optimize HIT services that advance telehealth, patient engagement, interoperability, and collection of social determinants of health to increase access to care and advance quality of care.
- **Patient Centered Medical Home Recognition (PCMH):** Recognizes health centers with PCMH recognition in one or more delivery sites.

Large Business of the Year Award

The Georgetown Chamber of Commerce awarded LSCC with the 2023 Large Business of the Year award. The award recognizes the significant impact LSCC has on the community, including our school-linked healthcare partnership with Georgetown ISD, the Big Pink Bus providing free and low-cost mammograms to Georgetown women, our investment to maintain administrative headquarters in Georgetown, and our providers and staff delivering exceptional healthcare to Georgetown residents. The award highlights our long-standing dedication to Georgetown that began with our first 2002 clinic opening.



Sharing the Vision

Growing Awareness of Our Mission



Maintaining Community Health Center Support

Advocacy Day at State Capitol

Lone Star Circle of Care (LSCC) staff visited state senators and representatives at the State Capitol in January 2023 to discuss the importance of health centers. LSCC staff emphasized how lawmakers can help increase the healthcare workforce, improve access, and serve more patients. LSCC was among dozens of community health centers from across Texas that participated in the Advocacy Day at the Capitol. Each community health center demonstrated the need to increase state funding for Federally Qualified Health Centers, women's health programs, and provider reimbursement programs, which will in turn encourage new medical professionals to begin their careers at health centers.

Big Pink Bus Program Director Testifies at State Funding Hearing

Program Director of LSCC's Big Pink Bus Rebecca Sorensen visited the State Capitol in February 2023 to share the experience of women who rely on LSCC's mobile mammography services. The American Cancer Society - Cancer Action Network of Texas invited Ms. Sorensen to testify before the Texas Senate Committee on Finance. Ms. Sorensen discussed how the Big Pink Bus helps local women access low-cost and free mammograms. Some of the free screenings are funded by the state Breast and Cervical Cancer Services (BCCS) program. Ms. Sorensen spoke in support of increased state funding for the program, to ensure that people don't miss out on breast cancer screenings because of financial barriers.

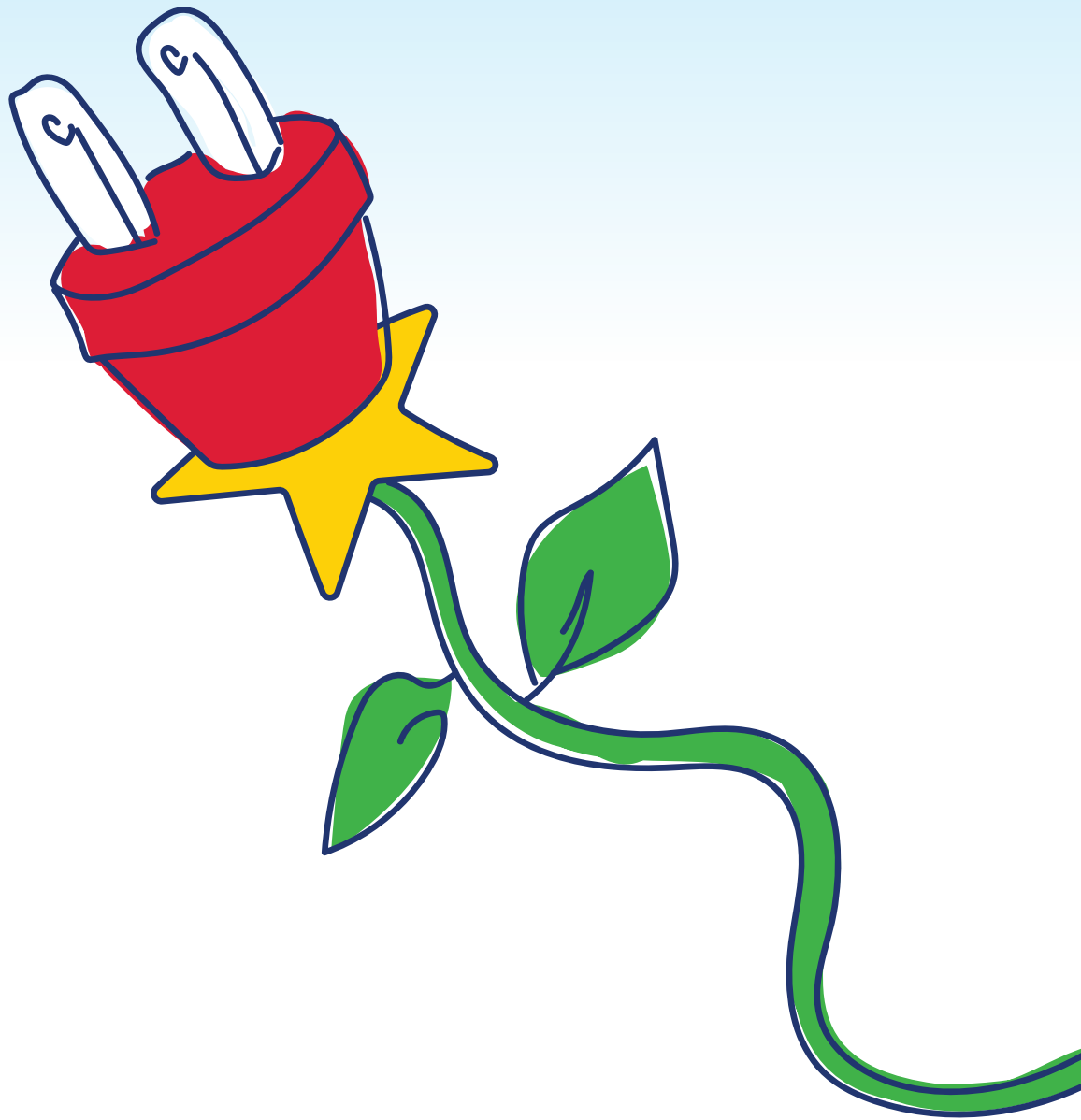
LSCC Meets with Lawmakers in Washington, D.C.

LSCC headed to our nation's capital in March 2023 to chat with lawmakers about policies and funding that support community health centers (CHCs). We were among dozens of CHCs from across the country that met with U.S. House members to discuss three priorities: Health Center Funding, Recruiting and Retaining Staff, and the 340B Drug Discount Program. LSCC talked about these issues with staff of Representatives John Carter, Lloyd Doggett, Michael McCaul, Michael Cloud, and Pete Sessions. The lawmakers were specifically chosen because LSCC clinics are in their districts.



Leveraging Technology

Modernizing Technology to Enhance Patient Care



Evaluating Technology

Lone Star Circle of Care's (LSCC) 2023-2025 Strategic Plan identified **Effective Use of Technology** as a top priority. LSCC's Electronic Health Record (EHR) system is the backbone of both the clinical system and revenue cycle management; therefore, it has a profound impact on patient and staff experience and LSCC's ability to provide high quality care. Critically evaluating LSCC's current EHR and other patient experience tools is a key step to ensure LSCC is effectively using technology. It is also a key step to ensuring positive patient and staff experience. After thorough assessment, LSCC determined that an immediate move to a modern, streamlined EHR with advanced functionality and dependability is in the best interest of all LSCC stakeholders. Furthermore, this transition supports LSCC's strategic aim to be a leader in delivering value-based care and allows LSCC to move from a self-hosted environment to cloud-based hosting by the vendor, effectively reducing burden on LSCC's Information Technology (IT) systems and infrastructure.

In March 2023, LSCC issued a public request for proposals to EHR and Integrated Practice Management System vendors. LSCC spent significant time reviewing proposals, taking part in demos, and conducting thorough due diligence before selecting athenahealth's athenaOne as our new EHR platform. In selecting athenaOne, LSCC focused on the following needs identified through our strategic planning process:

- **Better clinician and care team experience (e.g., fewer clicks, smoother workflow, less documenting time after clinic hours)**
- **More successful recruiting and retention of clinicians and staff**
- **Decreased throughput time leading to better patient experience and productivity**
- **Improved interoperability and actionable data for care plans**
- **Improved patient experience with superior patient portal and self-scheduling access**

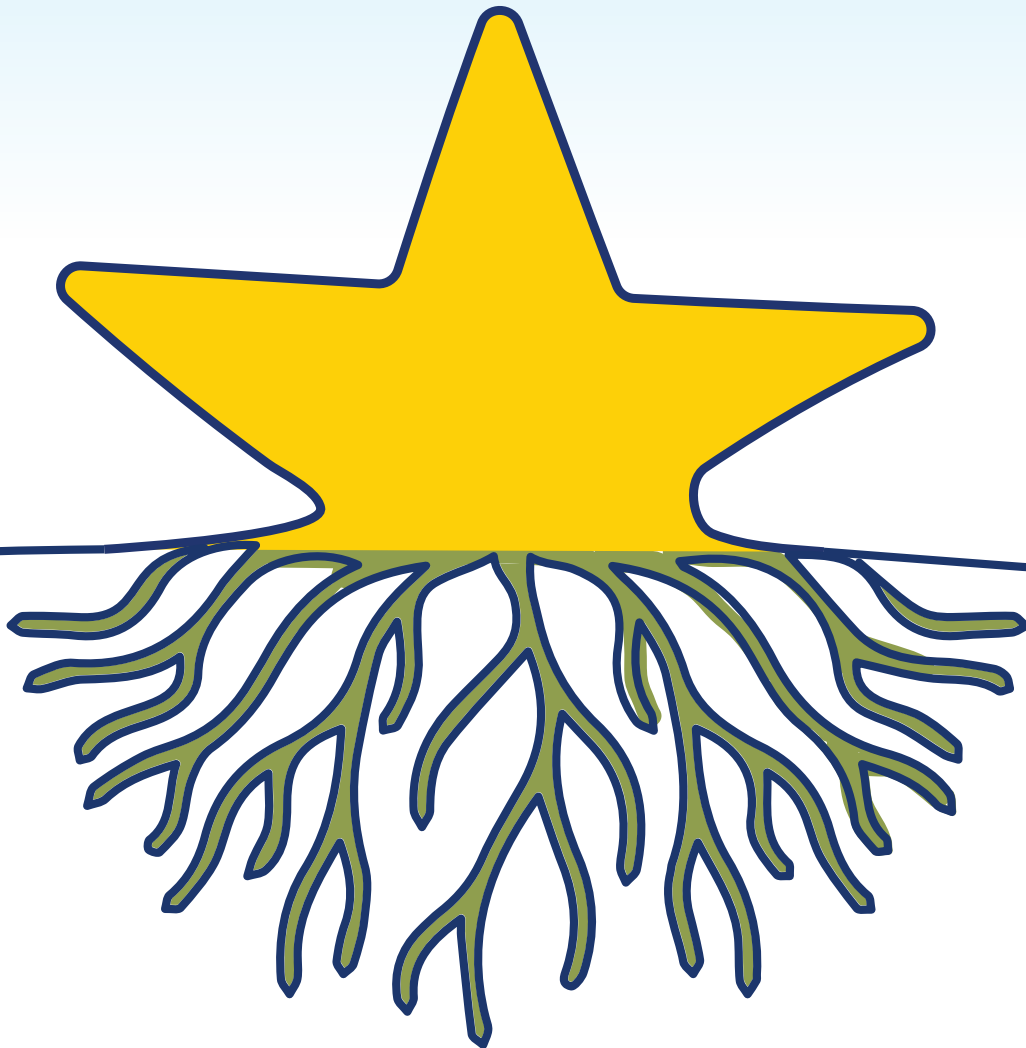
At the end of August 2023, LSCC kicked-off athenaOne workspace design and data migration activities, working directly with athenahealth to define workflows and complete system build assignments. By the end of 2023, LSCC completed nearly 30% of all implementation activities necessary to achieve a May 2024 go-live.

Coinciding with athenaOne development and data migration activities, the LSCC IT team identified various additional opportunities to modernize ancillary technologies and strengthen IT infrastructure. LSCC IT decommissioned legacy technologies no longer conducive to enhancing patient and staff experience. LSCC continues to work closely with internal and external constituencies to prepare for the large technological and operational evolution that athenaOne will bring in 2024.



Financial Sustainability

The Root of Mission Success



Our Financials

TOTAL PATIENT REVENUE

\$65,707,983

GRANTS, CONTRIBUTIONS & OTHER INCOME

\$28,453,539

TOTAL OPERATING EXPENSES

\$97,157,849

Operating Expenses Breakdown

Salaries & Wages

53%

Supplies & Other

26%

Employee Benefits & Taxes

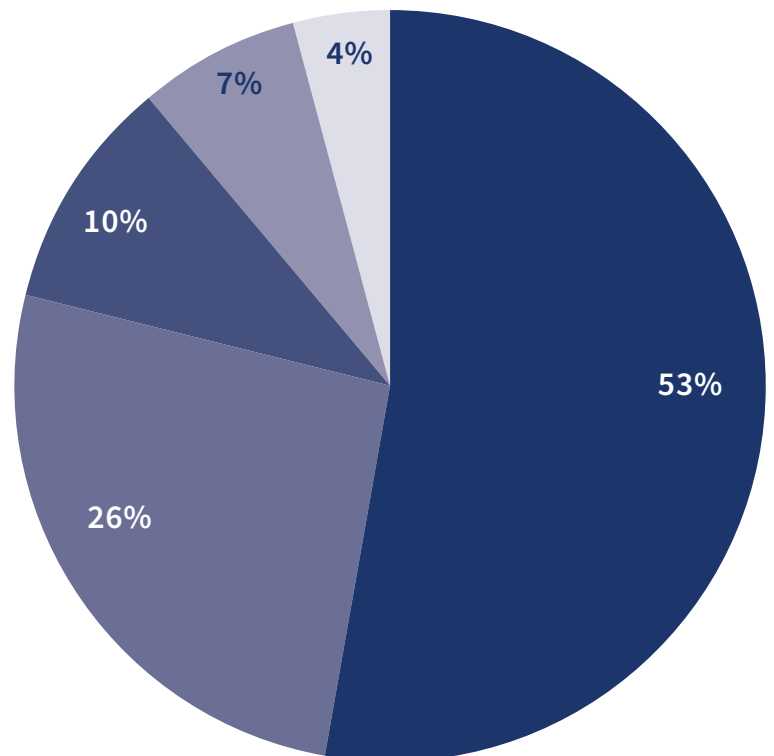
10%

Rent

7%

Depreciation & Amortization

4%



All financial information above is based on fiscal year 2023 data

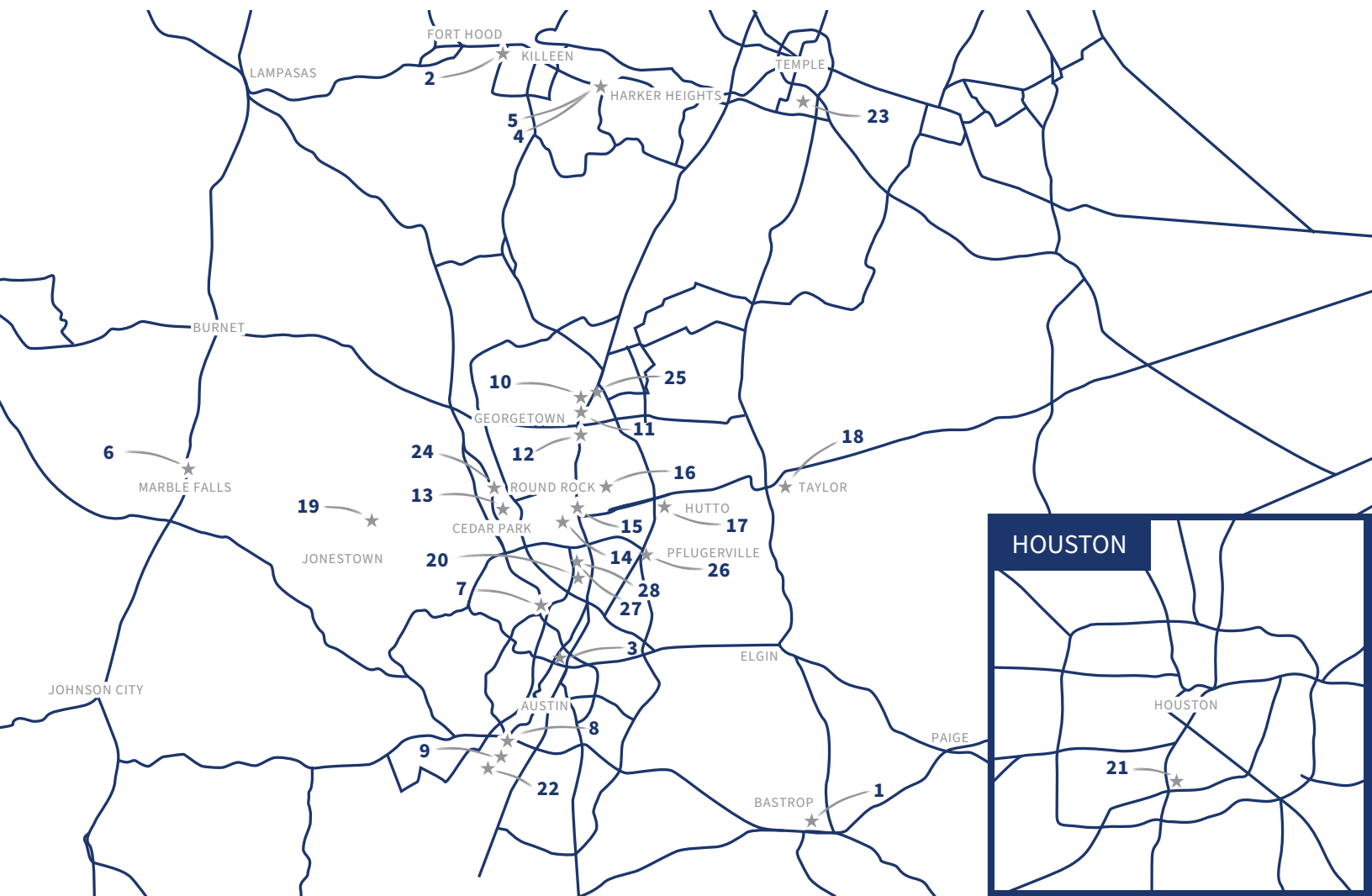
Preserving Your Healthcare Home

Ensuring Wellness to Strengthen Communities



Lone Star Circle of Care

Locations



LOCATIONS

1. Lone Star Circle of Care at Bastrop
2. Lone Star Circle of Care at Killeen
3. Lone Star Circle of Care Adult Medicine at St. John
4. Lone Star Circle of Care Pediatrics at Harker Heights
5. Lone Star Circle of Care Behavioral Health at Harker Heights
6. Lone Star Circle of Care at Marble Falls
7. Lone Star Circle of Care at Northwest Austin
8. Lone Star Circle of Care at Ben White Health Clinic
9. Lone Star Circle of Care at Stassney
10. Lone Star Circle of Care at Lake Aire Medical Center
11. Lone Star Circle of Care at Georgetown Dental
12. Lone Star Circle of Care at Georgetown Women's Center
13. Lone Star Circle of Care at Whitestone
14. Lone Star Circle of Care OB/GYN at Round Rock
15. Lone Star Circle of Care at Round Rock Health Clinic
16. Lone Star Circle of Care at Texas A&M Health Science Center
17. Lone Star Circle of Care at Hutto
18. Lone Star Circle of Care at Taylor
19. Lone Star Circle of Care at Jonestown
20. Lone Star Circle of Care at Collinfield
21. Lone Star Circle of Care at Houston Museum District
22. Lone Star Circle of Care at El Buen Samaritano
23. Lone Star Circle of Care at Temple
24. Lone Star Circle of Care at Cedar Park
25. Lone Star Circle of Care at Georgetown ISD Health & Wellness Center
26. Lone Star Circle of Care at Pflugerville
27. Lone Star Circle of Care at MoPac North
28. Lone Star Circle of Care at Oak Springs



Lone ★ Star
Circle of Care

Administration Office
205 East University Avenue, Suite 200
Georgetown, Texas 78626
(877) 800-5722
LoneStarCares.org